

Svenska

English

Deutsch

Français



Providing sustainable energy solutions worldwide

CTC EcoPart 400

Reservdelar och tillbehör



Produktmodeller

Innehållsförteckning

Produktmodeller	3
1. Reservdelar Exteriör	5
2. Reservdelar Elkablage	7
3. Reservdelar Kylsystem	9
4. Reservdelar Bipack & Övrigt	13
5. Reservdelar Tillbehör	15

EAN	Rsk no	CTC Art no	Name
7333077000448	6246451	585700001	CTC EcoPart 406, 3x400V
7333077000455	6246452	585700002	CTC EcoPart 408, 3x400V
7333077000462	6246453	585700003	CTC EcoPart 410, 3x400V
7333077000479	6246454	585700004	CTC EcoPart 412, 3x400V
7333077000486		585700005	CTC EcoPart 414, 3x400V
7333077000493		585700006	CTC EcoPart 417, 3x400V
7333077000509		585700011	CTC EcoPart 406, 1x230V
7333077000516		585700012	CTC EcoPart 408, 1x230V
7333077000523		585700013	CTC EcoPart 410, 1x230V
7333077000530		585700014	CTC EcoPart 412, 1x230V
7333077000547		585700015	CTC EcoPart 414, 1x230V
		#585700021	CTC EcoPart 406 3x400V, 1xLEP
		#585700022	CTC EcoPart 408 3x400V, 1xLEP
		#585700023	CTC EcoPart 410 3x400V, 1xLEP
		#585700024	CTC EcoPart 412 3x400V, 1xLEP
		#585700025	CTC EcoPart 414 3x400V, 1xLEP
		#585700026	CTC EcoPart 417 3x400V, 1xLEP
7333077000554	6246935	585700035	CTC EcoPart 414 3x400V, 2xLEP
7333077000561	6246936	585700036	CTC EcoPart 417 3x400V, 2xLEP



200212 Utgåva 9/Release 9 ÄU CR00033

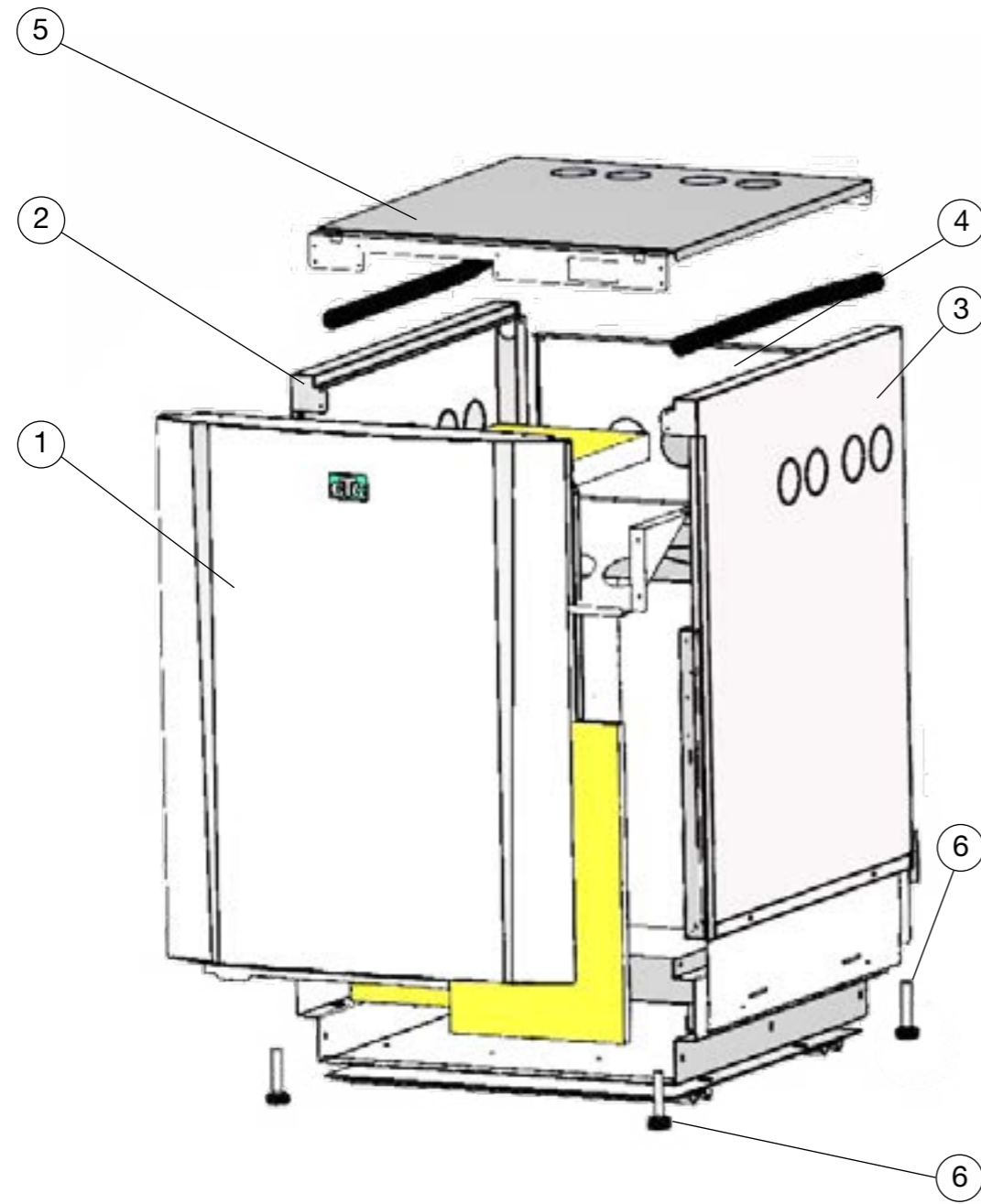
191126 Utgåva 8/Release 8 ÄU 5818, 5739

190313 Utgåva 7/Release 7 ÄU 5690, 5612

190227 Utgåva 6/Release 6 ÄB 5701, 5588

181217 Utgåva 5/Release 5 ÄB 5648

180921 Utgåva 4/Release 4 ÄB 5530, 5568



1. Reservdelar Exteriör

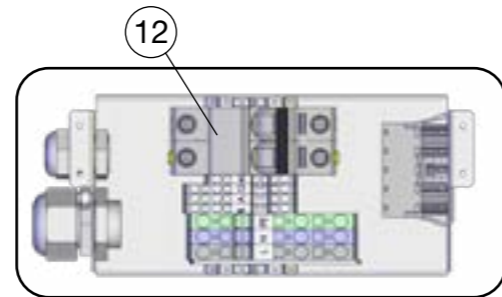
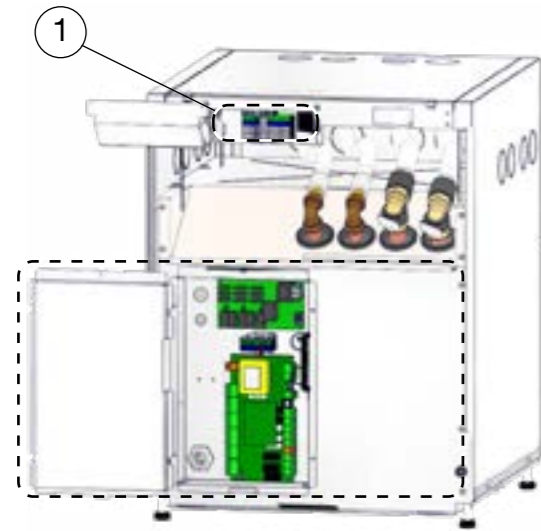
Artikel nr	Namn	Serie från	Serie till	Rsk nr
1	585965301 Front EP 400	730112260239	-	
2	585564317 Plåt, sida, vänster EP 400	730112260239	-	
3	585565317 Plåt, sida, höger EP 400	730112260239	-	
4	585566301 Plåt, bakre	730112260239	-	
5	585567317 Plåt, Tak	730112260239	-	
6	584624403 Ställfot M10	730112260239	-	

2. Reservdelar Elkablage

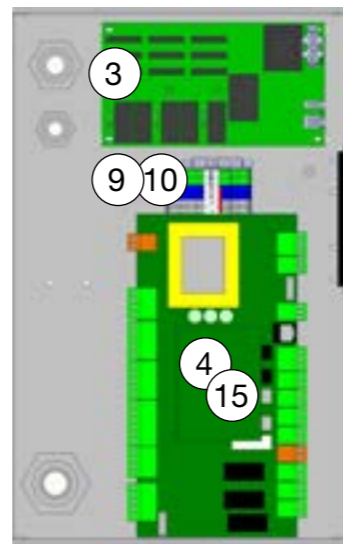
2.

Serie från 730112260239 Serie till -

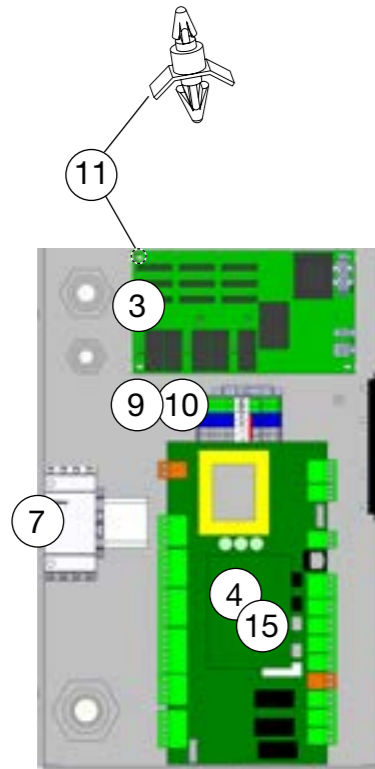
Artikel nr	Namn	Serie från	Serie till	Rsk nr
1	587829301 Anslutningsbox , 3x400	730112260239	-	
1	587820301 Anslutningsbox , 1x230	730112260239	-	
3	584797471 Kretskort, mjukstart , EP 406-410, 3x400	730112260239	-	
3	584797471 Kretskort, mjukstart , EP 412	730112260239	730113430344	
3	585738471 Kretskort, mjukstart , EP 412 3x400, 13A	730113430345	-	
3	585738471 Kretskort, mjukstart , EP 414-417, 3x400, 13A	730112260239	-	
3	585770401 Mjukstart , EP 406, 412,414, 32U, 1x230	730112260239	-	
3	585752301 Mjukstart , EP 408, 410, 25U, 1x230	730112260239	-	
4	586282401 Kretskort, relä , EP 406, 3x400	-	730119060062	
4	586282402 Kretskort, relä , EP 408, 3x400	-	730119060062	
4	586282403 Kretskort, relä , EP 410, 3x400	-	730119060062	
4	586282404 Kretskort, relä , EP 412, 3x400	-	730119060062	
4	586282405 Kretskort, relä , EP 414, 3x400	-	730119060062	
4	586282406 Kretskort, relä , EP 417, 3x400	-	730119060062	
5	586282407 Kretskort, relä , EP 406 , 1X230V	-	730119060062	
5	586282410 Kretskort, relä , EP 410 , 1X230V	-	730119060062	
5	586282408 Kretskort, relä , EP 414 , 1X230V	-	730119060062	
5	586282411 Kretskort, relä , EP 408 , 1X230V	-	730119060062	
5	586282409 Kretskort, relä , EP 412 , 1X230V	-	730119060062	
6	585753401 Hjälprelä , RELACO C10 T13 6A	730112260239	-	
7	586281401 Kontaktor , 25 A, EP 312-317, 3x400	730112260239	-	
8	913180401 Kondensator , 40µf, EP 406, 1x230V	730112260239	-	
8	582065401 Kondensator , 50µf, EP 408, 414, 1x230V	730112260239	-	
8	913181401 Kondensator , 60µf, EP 410, 1x230V	730112260239	-	
8	913182401 Kondensator , 45µf, EP 412, 1x230V	730112260239	-	
9	913146403 Plint , PLINT ST 2,5 TWIN BU	730112260239	-	
9	584359003 Plint , ST 2,5 QUATTRO PE	730112260239	-	
9	913146402 Plint , PLINT ST 2,5 TWIN BU, 3x400V	730112260239	-	
9	584359001 Plint , ST 2,5 QUATTRO	730112260239	-	
9	913146401 Plint , PLINT ST 2,5 TWIN	730112260239	-	
9	913197403 Plint , ST6 TWIN PE	730112260239	-	
9	913197402 Plint , ST6 TWIN BU	730112260239	-	
9	913197403 Plint , ST6 TWIN PE	730112260239	-	
9	913146401 Plint , PLINT ST 2,5 TWIN	730112260239	-	
10	913145401 Plint , PLINT ST 2,5	730112260239	-	
11	913193401 Distans snap-in , 5 mm.	730112260239	-	
12	588188301 Automatsäkring , 2P 10A, 1x230V	730112260239	-	
13	585576302 Plintsats, kretskort , UPC Conn	730112260239	-	
14	584873402 Plintsats, kretskort , UP2CONN0S0	730112260239	-	
15	588655401 Kretskort, relä , EP 406, 3x400	730119060063	-	
15	588655402 Kretskort, relä , EP 408, 3x400	730119060063	-	
15	588655403 Kretskort, relä , EP 410, 3x400	730119060063	-	
15	588655404 Kretskort, relä , EP 412, 3x400	730119060063	-	
15	588655405 Kretskort, relä , EP 414, 3x400	730119060063	-	
15	588655406 Kretskort, relä , EP 417, 3x400	730119060063	-	
16	588655407 Kretskort, relä , EP 406 , 1X230V	730119060063	-	
16	588655410 Kretskort, relä , EP 410 , 1X230V	730119060063	-	
16	588655408 Kretskort, relä , EP 414 , 1X230V	730119060063	-	
16	588655411 Kretskort, relä , EP 408 , 1X230V	730119060063	-	
16	588655409 Kretskort, relä , EP 412 , 1X230V	730119060063	-	



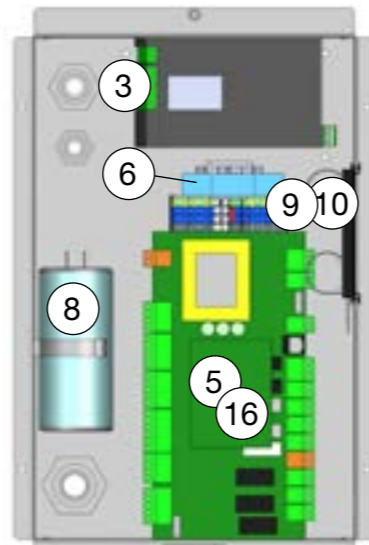
EcoPart 406-414 1x230V



EcoPart 406-410 3x400V

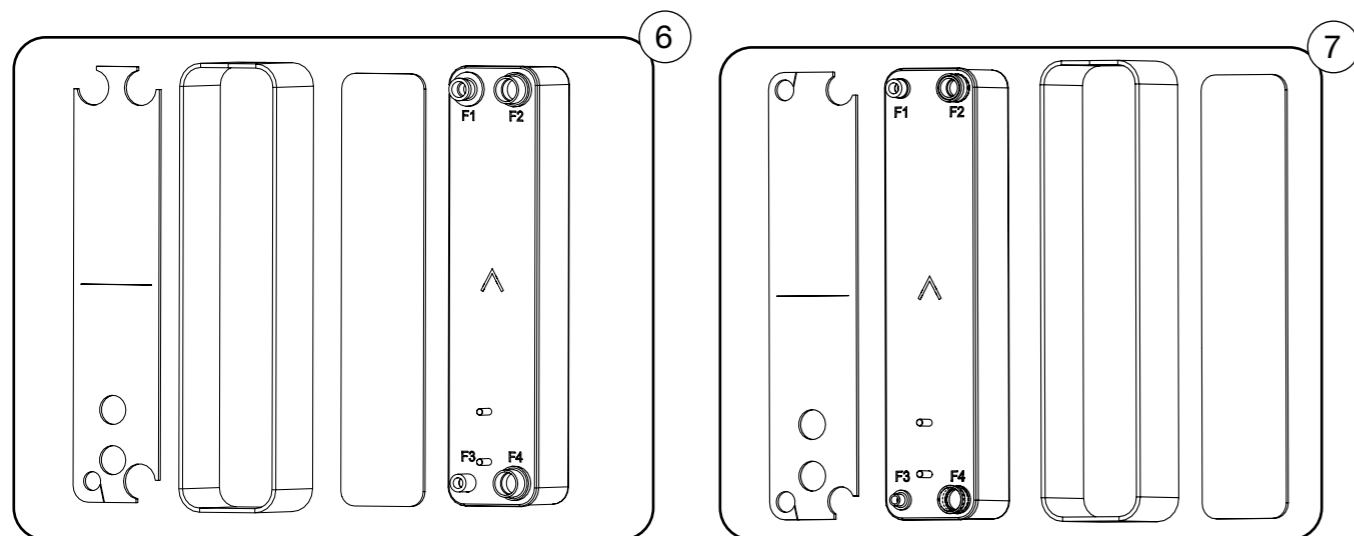
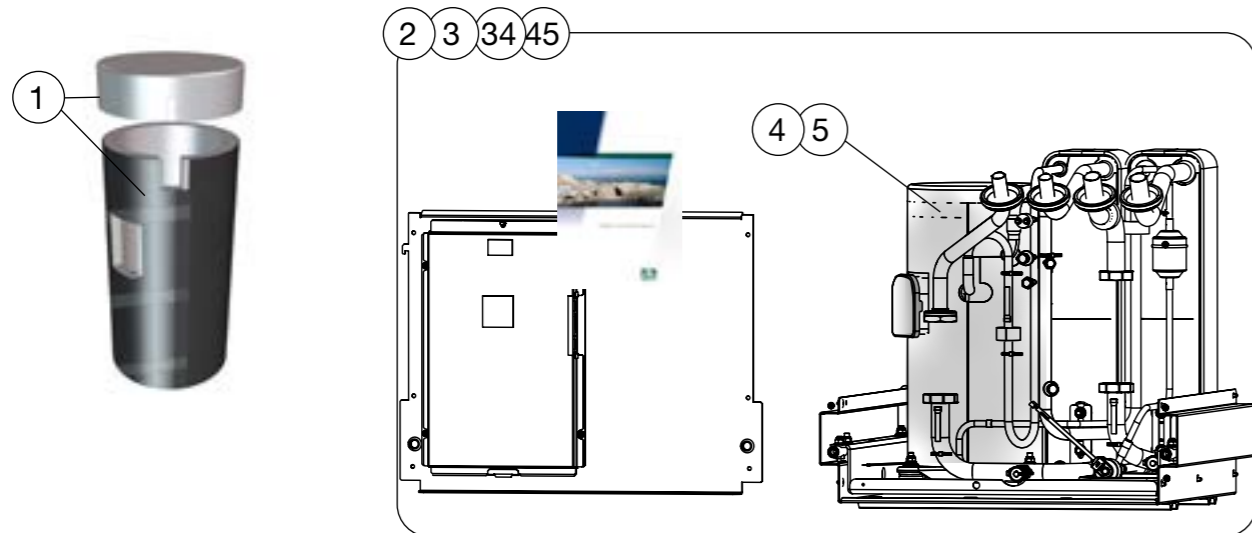


EcoPart 412-417 3x400V



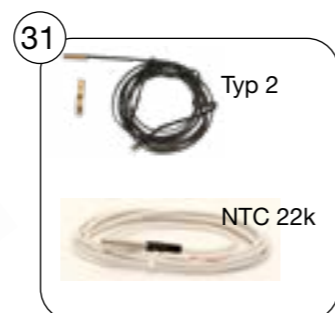
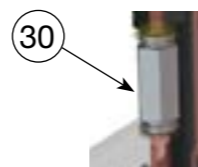
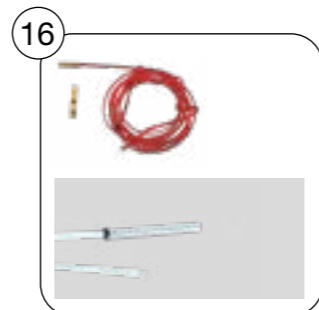
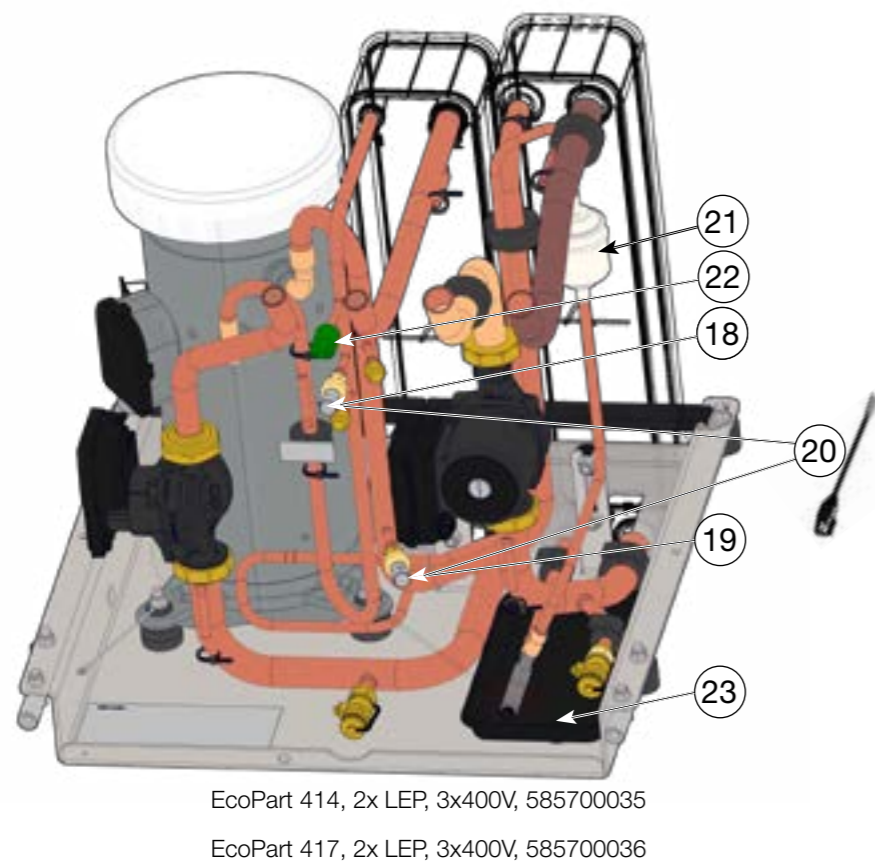
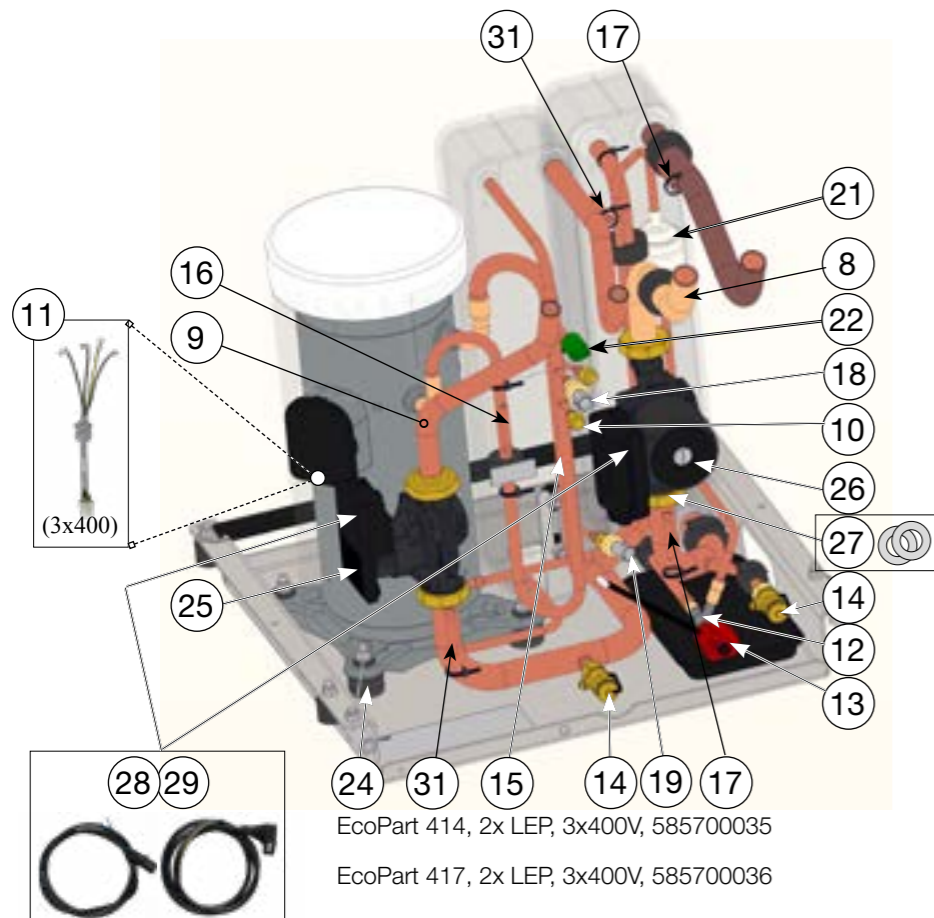
EcoPart 406-414 1x230V





3. Reservdelar Kylsystem

Artikel nr	Namn	Serie från	Serie till	Rsk nr
1	585335301 Ljudhuvsatts kompressor , AEH33	730112260239	-	-
1	585335302 Ljudhuvsatts kompressor, ZH21-26	730112260239	-	-
1	585335303 Ljudhuvsatts kompressor, ZH30-45	730112260239	-	-
2	586700031 Kylmodul, service , 406:l, 3x400V, no pumps	-	730119060062	-
2	586700032 Kylmodul, service , 408:l, 3x400V, no pumps	-	730119060062	-
2	586700033 Kylmodul, service , 410:l, 3x400V, no pumps	-	730119060062	-
2	586700034 Kylmodul, service , 412:l, 3x400V, no pumps	-	730119060062	-
2	586700035 Kylmodul, service , 414:l, 3x400V, no pumps	-	730119060062	-
2	586700036 Kylmodul, service , 417:l, 3x400V, no pumps	-	730119060062	-
3	586700041 Kylmodul, service , 406:l 1x230V, no pumps	-	730119060062	-
3	586700042 Kylmodul, service , 408:l, 1x230V, no pumps	-	730119060062	-
3	586700043 Kylmodul, service , 410:l, 1x230V, no pumps	-	730119060062	-
3	586700044 Kylmodul, service , 412:l, 1x230V, no pumps	-	730119060062	-
3	586700045 Kylmodul, service , 414:i, 1x230V, no pumps	-	730119060062	-
4	584870301 Kompressor , MITSU AEH33Y, 406, 3x400V	730112260239	-	-
4	580428403 Kompressor , COPEL ZH21K4E-TFD, 408, 3x400v	730112260239	-	-
4	580428404 Kompressor , COPEL ZH26K4E-TFD, 410, 3x400v	730112260239	-	-
4	580428404 Kompressor , COPEL ZH30K4E-TFD, 412, 3x400v	730112260239	-	-
4	580428405 Kompressor , COPEL ZH38K4E-TFD, 414, 3x400v	730112260239	-	-
4	580428407 Kompressor , COPEL ZH45K4E-TFD, 417, 3x400v	730112260239	-	-
5	585592301 Kompressor , MITSU AEH33VEYMT, 406, 1x230V	730112260239	-	-
5	913177404 Kompressor , COPEL ZH21K4E-PFJ, 408, 1x230V	730112260239	-	-
5	913177402 Kompressor , COPEL ZH26K4E-PFJ, 410, 1x230V	730112260239	-	-
5	913177403 Kompressor , COPEL ZH30K4E-PFZ, 412, 1x230V	730112260239	-	-
5	913177405 Kompressor , COPEL ZH38K4E-PFZ, 414, 1x230V	730112260239	-	-
6	584783301 Förångare, isolerad , 406, 3x400V, 1x230V	730112260239	-	-
6	584783302 Förångare, isolerad , 408, 410, 3x400V, 1x230V	730112260239	-	-
6	584783303 Förångare, isolerad , 412, 3x400V, 1x230V	730112260239	-	-
6	584783304 Förångare, isolerad , 414-417, 3x400V, 1x230V	730112260239	-	-
7	584785301 Kondensator, isolerad , 406, 3x400V, 1x230V	730112260239	-	-
7	584785302 Kondensator, isolerad , 408, 3x400V, 1x230V	730112260239	-	-
7	584785303 Kondensator, isolerad , 410, 3x400V, 1x230V	730112260239	-	-
7	584785304 Kondensator, isolerad , 412, 3x400V, 1x230V	730112260239	-	-
7	584785305 Kondensator, isolerad , 414-417, 3x400V, 1x230V	730112260239	-	-

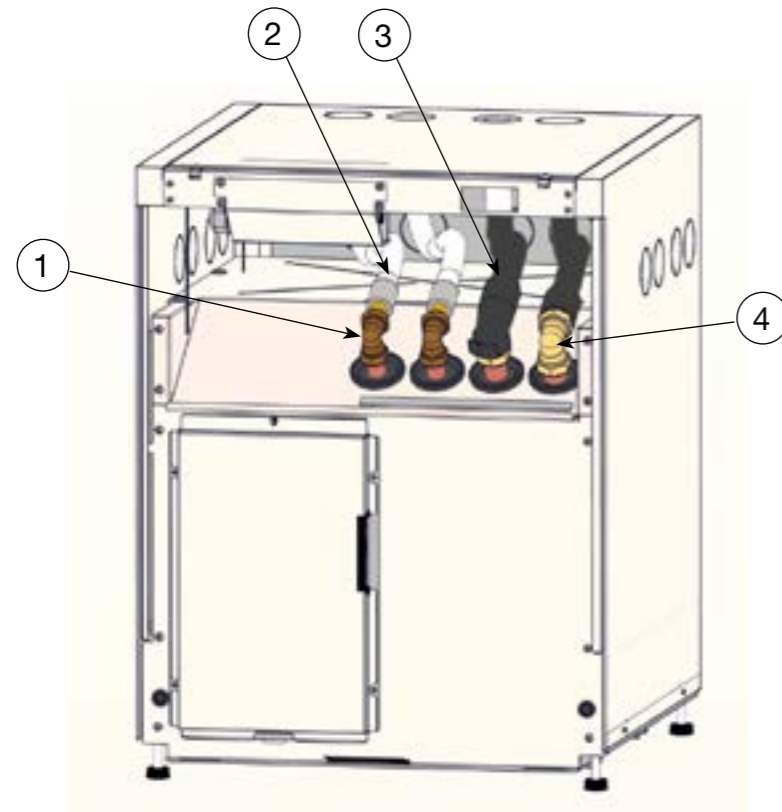


3. Reservdelar Kylsystem

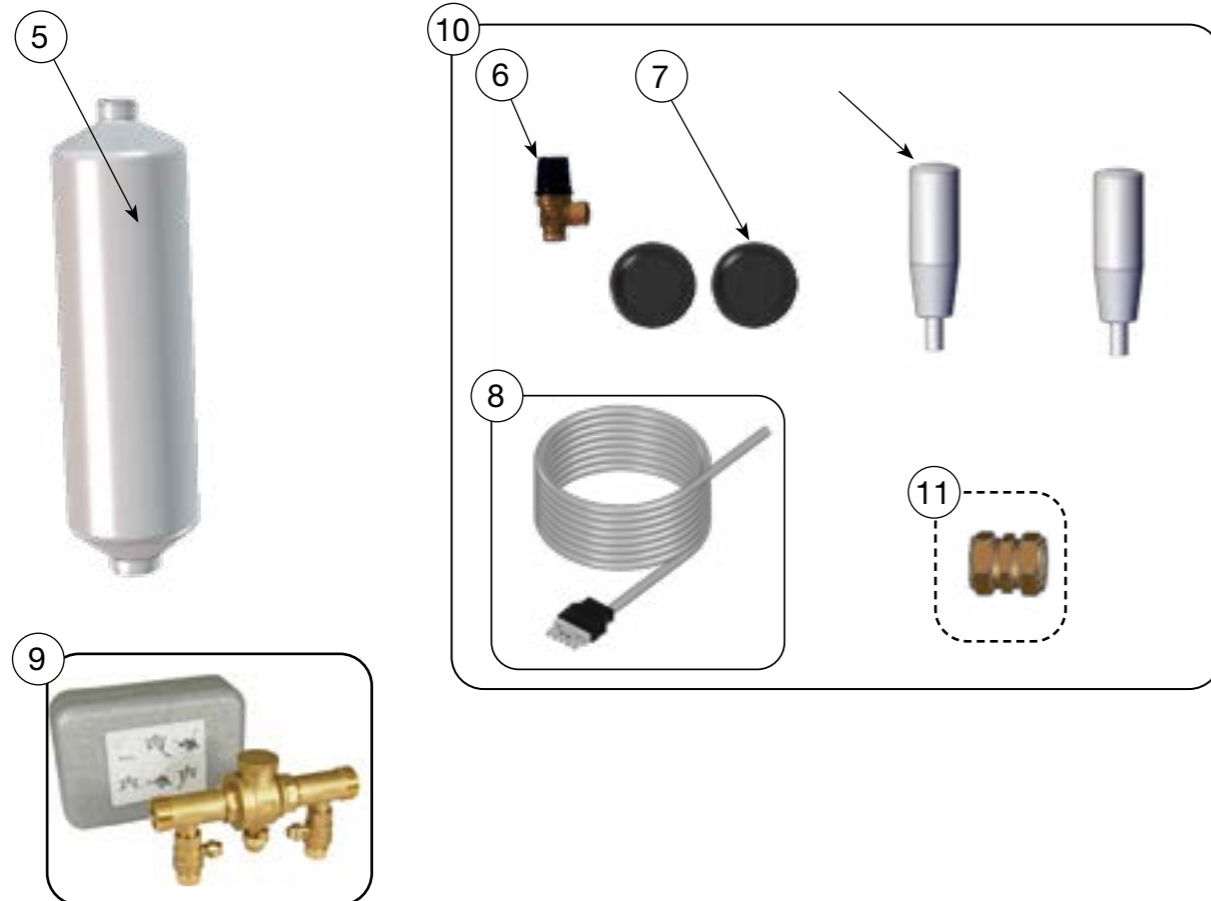
8	586916301 Rör, brinepump, kit, isolerad	730112260239 -
9	585963301 Rör, laddpump, kit , UPM2 15-60 130	730112260239 -
10	587603301 Schradventil, rak , 1/4"	730112260239 -
11	585162401 Kabel Kompr., matning , 4G 1.5	730112260239 -
	Kabel Kompr., matning , 4G 2.5 406-410,	
11	585350401 3x400V	730112260239 -
11	585163401 Kabel Kompr., matning , 4G 2.5 412, 3xv400V	730112260239 -
12	584757302 Expansionsventil, el , E2V14USF, KM 406	730112260239 -
12	584757303 Expansionsventil, el , E2V18USF, KM 408, 410	730112260239 -
12	584757304 Expansionsventil, el , E2V24USF, KM 412-417	730112260239 -
13	588561301 Stator , E2V-UP	730112260239 -
14	588718301 Avtappningsventil , 1/2"	730112260239 -
15	588564301 Givare, suggas , Type 1	730119060063 -
15	588568302 Givare, suggas , NTC 015 WF00	- 730119060062
16	588566301 Givare hetgas , Type 3	730119060063 -
16	588567301 Givare hetgas , NTC 050 1,25m	- 730119060062
17	588564301 Givare, brine , Typ 1,	730119060063 -
17	588573301 Givare, brine , 2,5m 22K,	- 730119060062
18	584486302 Högtrycksgivare , 45bar	730112260239 -
19	584486301 Lågtrycksgivare	730112260239 -
20	584936302 Kabel hög/lågtrycksgivare , 1300 mm	730112260239 -
21	587525401 Torkfilter , DMF053S	730112260239 -
22	582513402 Högtryckspressostat , 31bar L=100	730112260239 -
23	912598401 Kondensvattenskål	730112260239 -
24	912649402 Dämpare , M8	730112260239 -
	Laddpump, packningar , EP 414-417,	
25	588895301 25/85-130 PWM	730112260239 -
	Brinepump, packningar , EP 406,408,	
26	588439301 25/70-180	730112260239 -
	Brinepump, packningar, kabel , EP 410-417,	
26	588898301 25/125-180	730112260239 -
27	588821301 Packningssats stålring , Ø45/27*3	730112260239 -
28	585214301 Kabel, laddpump, PWM, 1 m	730112260239 -
29	586451401 Kabel laddpump matning 1m	730112260239 -
30	585747401 Övergångsnippel , Ø28mm-Ø32mm L=130mm	730112260239 -
31	588565301 Givare, framl, retur , Typ 2	730119060063 -
31	588573301 Givare, framl, retur , 22K 2.5m, shrink tubing	- 730119060062
34	587500031 Kylmodul, service , 406:II, 3x400V, no pumps	730119060063 -
34	587500032 Kylmodul, service , 408:II, 3x400V, no pumps	730119060063 -
34	587500033 Kylmodul, service , 410:II, 3x400V, no pumps	730119060063 -
34	587500034 Kylmodul, service , 412:II, 3x400V, no pumps	730119060063 -
34	587500035 Kylmodul, service , 414:II, 3x400V, no pumps	730119060063 -
34	587500036 Kylmodul, service , 417:II, 3x400V, no pumps	730119060063 -
45	587500041 Kylmodul, service , 406:II 1x230V, no pumps	730119060063 -
45	587500042 Kylmodul, service , 408:II, 1x230V, no pumps	730119060063 -
45	587500043 Kylmodul, service , 410:II, 1x230V, no pumps	730119060063 -
45	587500044 Kylmodul, service , 412:II, 1x230V, no pumps	730119060063 -
45	587500045 Kylmodul, service , 414:II, 1x230V, no pumps	730119060063 -

4. Reservdelar Bipack & Övrigt

Serie från 730112260239 Serie till -



Artikel nr	Namn	Serie från	Serie till	Rsk nr
1 583840403	Vinkelkoppling, 6-kant , 28x22	730112260239	-	
2 585989301	Flexslang, metallflätad , 700 mm, 22x22	730112260239	-	
3 585989305R	Flexslang, isolerad , 1000 mm R20xR20	730112260239	-	6212348
4 588715301	Vinkelkoppling, 6-kant , 28x28	730112260239	-	
5 578511401	Nivåkärl, brine , 1"x1/2", EP 406-412	730112260239	-	6246804
6 588720301	Säkerhetsventil , 1/2" 3 bar	730112260239	-	
7 585054401	Gummigenomföring , Ø 60	730112260239	-	
8 586040401T	Kommunikationkabel , Modbus, 5 m	730112260239	-	6246819
9 586720301T	Påfyllnadssats, mässing , G25, EP 406-412	730112260239	-	6251102
9 586720302T	Påfyllnadssats, mässing , G32, EP 414, 417	730112260239	-	6251103
10 585729301	Bipack , EP 406-412	730112260239	-	
10 585998301	Bipack , EP 414-417	730112260239	-	
11 584024401	Koppling rak , 28x28, EP 414-417	730112260239	-	



5.

5. Reservdelar Tillbehör

Serie från 730112260239 Serie till -

Artikel nr	Namn	Serie från	Serie till	Rsk nr
1	586041401 Kommunikationkabel , Modbus, 10 m	730112260239	-	6246820
2	578685401 Kalklösare , AQUA	730112260239	-	6246325
3	586500301 CTC Förhöjningssockel , 174 mm	730112260239	-	6212327
4	585991301 Säkerhetspressostat , F4RL1G/M2 1/4"	730112260239	-	6212353
5	587893301 CTC Basicstyrning	730112260239	-	6212361
	CTC Laddpump, kablar, packningar , 25/70-130			
6	587477303 6-8 kW	730112260239	-	6212428
	CTC Laddpump, kablar, packningar , 25/75-130			
6	587477302 10-12 kW	730112260239	-	6212427
	CTC Laddpump, kablar, packningar , 25/85-130			
6	587477301 14-22 kW	730112260239	-	6212426
	CTC Laddpump, kablar, packningar , EZ 250,			
6	587477304 15/75-130 10-22 kW	730112260239	-	6212429
7	588893301 Laddpump, packningar , 25/70-130 6-8 kW	730112260239	-	6212474
7	588894301 Laddpump, packningar , 25/75-130 10-12 kW	730112260239	-	6212475
7	588895301 Laddpump, packningar , 25/85-130 14-22 kW	730112260239	-	6212476
7	588922301 Laddpump, packningar , 15/75-130 10-22 kW	730112260239	-	6212486

